

## Johnson Gill Annex and Courthouse 1 Kings Highway, Middletown, NJ

1. The women's bathroom at the Johnson Gill Annex building has the following problems which need to be corrected.
  - a. The stall measures 65 inches by 59 inches.
  - b. There are round handles on the faucets which require guests to twist with the wrist, contrary to ANSI section 309.4 and ADAAG section 4.19.5.



- c. The sink apron measures 28.75 inches when measured to the lip, contrary to ADAAG section 4.19.2.
  - d. There is no insulation on the hot water and drain pipes under the sink to avoid possible contact by a disabled person, contrary to ANSI section 606.6 and ADAAG section 4.19.4.



- e. The back grab bar measures 31 inches long, contrary to ANSI section 604.5 and ADAAG section 4.17.6.
- f. The side grab bar measures 48 inches long, contrary to ANSI section 604.5 and ADAAG section 4.17.6.
- g. The toilet measures 15.5 inches above the finished floor to the lip, contrary to ANSI section 604.4 and ADAAG section 4.16.3.



- h. The coat hook measures 68.5 inches above the finished floor, contrary to ANSI section 604.8.4.2 and ADAAG section 4.2.6.



- i. There is a pinch lock on the stall door which requires pinching, grasping, and twisting of the hand and wrist, contrary to ANSI section 404.2.7 and ADAAG section 4.13.9.
- k. The stall does not have a self closing door, contrary to ANSI section 604.8.



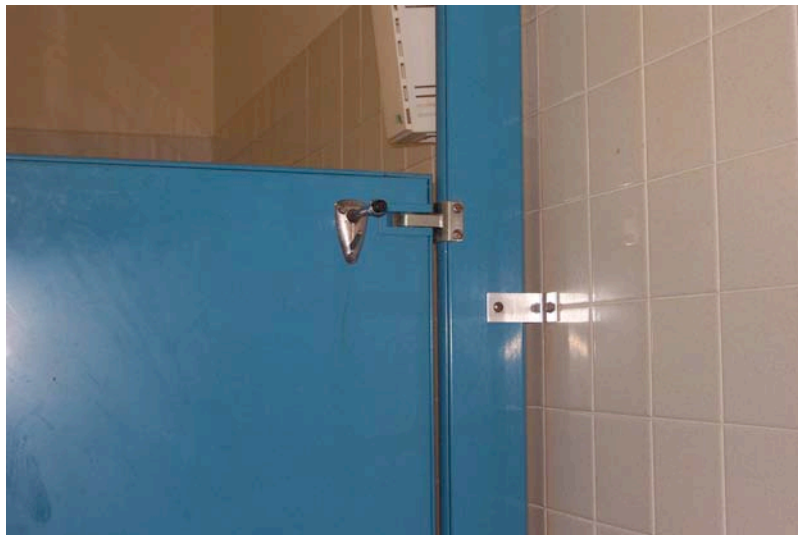
- j. The bathroom door requires more than 5 pounds of pressure to open, contrary to ANSI section 4.4.2.9 and ADAAG section 4.13.11.
- l. The paper towels are dispensed in a way that requires a guest to pinch and grasp with the hand, contrary to ANSI section 309.4 and ADAAG section 4.27.4.
- m. The mirror measures 41 inches to the bottom of the reflective surface above the finished floor, contrary to ADAAG section 4.19.6.



2. The men's bathroom at the Johnson Gill Annex building has the following problems which need to be corrected.
  - a. The toilet measures 16 inches above the finished floor to the top of the seat, contrary to ANSI section 604.4 and ADAAG section 4.16.3.
  - b. The continuous grab bar measures 4 inches off of the wall at the corner, contrary to ANSI section 609.3 and ADAAG section 4.26.2.
  - c. The flush valve is located on the narrow side of the toilet, contrary to ADAAG section 4.16.5.



- d. The sink apron measures 28 inches above the finished floor, contrary to ADAAG section 4.19.2.
- e. The door requires more than 5 pounds of pressure to open, contrary to ANSI section 404.2.9 and ADAAG section 4.13.11.
- f. The coat hook measures 68.5 inches above the finished floor, contrary to ANSI section 604.8.4.2 and ADAAG section 4.2.6.

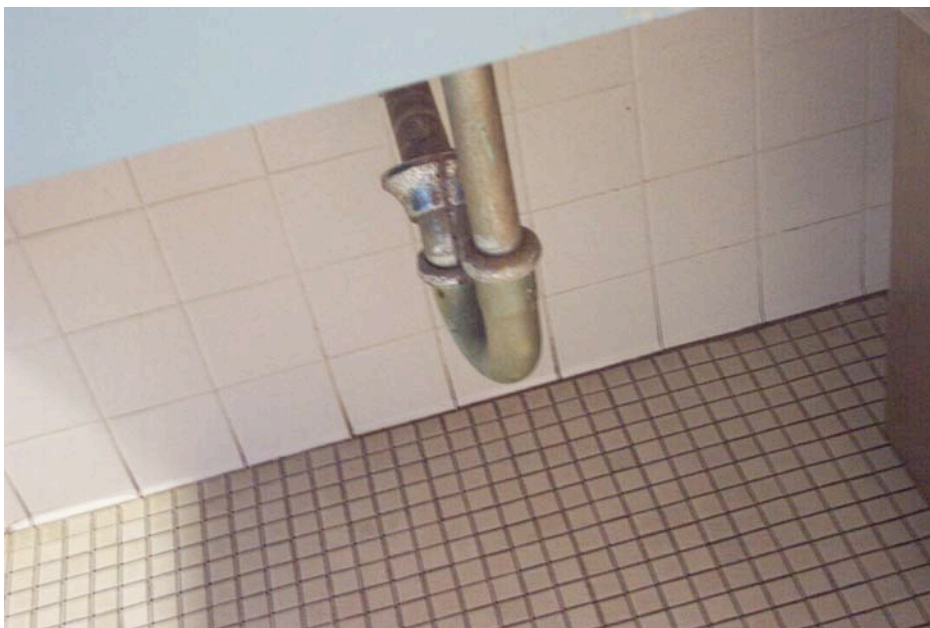




- g. There are round handles on the faucets which require guests to twist with the wrist, contrary to ANSI section 309.4 and ADAAG section 4.19.5.



- h. There is no insulation on the sink pipes under the sink to avoid possible contact by a person contrary to ANSI section 606.6 and ADAAG section 4.19.4.



- i. There is a pinch lock on the stall door which requires pinching, grasping, and twisting of the hand and wrist, contrary to ANSI section 404.2.7 and ADAAG section 4.13.9.



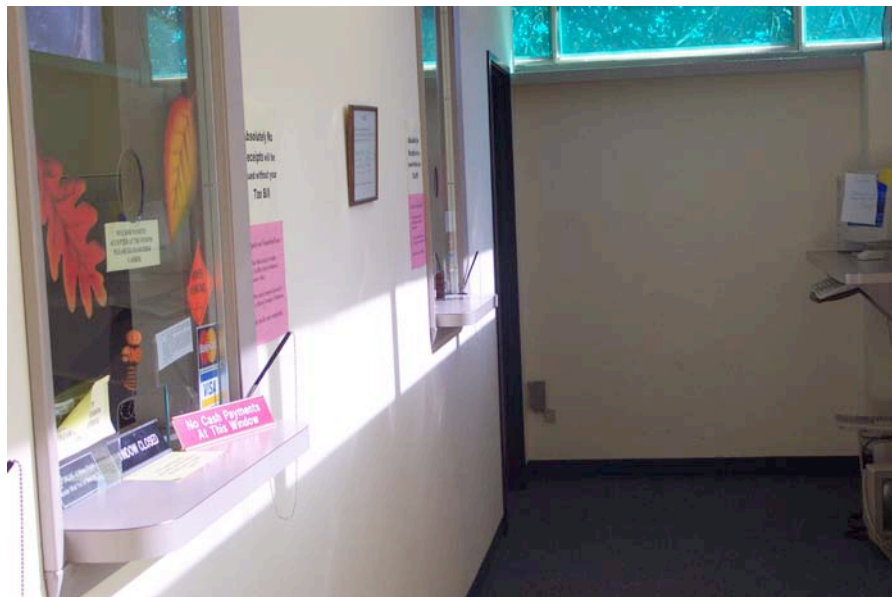
- j. The paper towels are dispensed in a way that requires a guest to pinch and grasp with the hand, contrary to ANSI section 309.4 and ADAAG section 4.27.4.



3. The counter at the Tax Assessment office measures 45 inches above the finished floor, contrary to ANSI section 904.2 and ADAAG section 7.2(1).



4. The Tax Collector's office has the following problems which need to be corrected.
  - a. The counter, where money is collected, measures 45 inches above the finished floor, contrary to ANSI section 904.2 and ADAAG section 7.2(1).



- b. The computer keyboard measures 41 inches to the bottom and 42 inches to the top, contrary to ANSI section 902.3 and ADAAG section 4.32.4 .



- c. The side counter next to the computer measures 45 inches above the finished floor, contrary to ANSI section 902.3 8 and ADAAG section 4.32.4.





5. The door at the entrance to the Johnson Gill Annex closes faster than 3 seconds, contrary to ANSI section 404.2.8.1 and ADAAG section 4.13.10. The pull weight on the door is more than 5 pounds contrary to ANSI section 4.4.2.9 and ADAAG section 4.13.11.



6. There is a slope at the door to the entrance of the Johnson Gill Annex that is 2.3%, contrary to ANSI section 404.2.4.5 and ADAAG section 4.13.6.





7. The parking area at the Johnson Gill Annex has the following problems to be corrected.
  - a. The curb cut threshold is 1/3 inch deep, contrary to ANSI section 303.3 and ADAAG section 4.3.8.
  - b. The first designated disabled parking space and access aisle have a slope of 2.5%, contrary to ANSI section 502.4 and ADAAG section 4.6.3.









8. The parking at the police station has the following problems which need to be corrected.
  - a. There is no proper signage at the spaces, contrary to ANSI section 502.6 and ADAAG section 4.6.4.





- b. The parking spaces have running slopes ranging from 3.6% to 4.1%, contrary to ANSI section 502.4 and ADAAG section 4.6.3.





- c. The access aisle is only 7 feet wide, contrary to ANSI section 502.3.1 and ADAAG section 4.6.6. There is also no route of travel to the ramp from the parking space except into traffic behind parked vehicles contrary to ANSI section 502.3. and ADAAG section 4.6.3.





- d. The landing at the bottom of the ramp to the court house door has a cross slope of 2.3%, contrary to ANSI section 405.7 and ADAAG section 4.8.4.
- e. The handrail extensions on the ramp are not long enough ( 12 inches ), contrary to ANSI section 505.10.1 and ADAAG section 4.8.5(2).



- f. The slope of the first section of the ramp to the landing is 9.8%, contrary to ANSI section 405.2 and ADAAG section 4.8.2.





- g. The cross slope at the landing is 2.2%, contrary to ANSI section 405.7.1 and ADAAG section 4.8.4.





9. The women's bathroom inside the police department and court has the following problem which need to be corrected.
  - a. There is a pinch lock on the stall door which requires pinching and grasping with the hand, contrary to ANSI section 404.2.7 and ADAAG section 4.13.9. Because there is no self door closing mechanism there is a need to pinch the handle to secure the door.



- b. The paper towel dispenser requires pinch to remove paper towels contrary to ANSI section 309.4 and ADAAG section 4.27.4.



10. The coke machine coin slots measure 55 inches above the finished floor, contrary to ANSI sections 308.2.1 and 308.3.1 and ADAAG section 4.2.6.



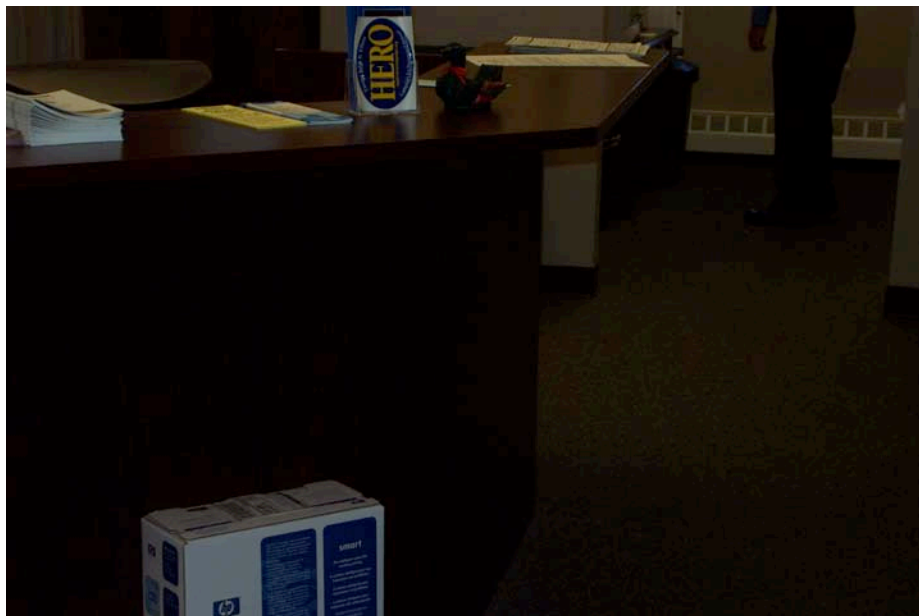
11. The men's bathroom inside the Police Department and Court has the following problems to be corrected.
- a. The toilet paper dispenser is mounted 44 inches off of the back wall, contrary to ANSI section 604.7 and ADAAG section 4.16.6.
  - b. The coat hook is mounted 52 inches above the finished floor, contrary to ANSI section 604.8.4.2 and ADAAG section 4.2.6.
  - c. There is 30 inches of clearance from the toilet to the coat hook, contrary to ANSI section and ADAAG section.
  - d. The width between the urinal shields is 29.5 inches, contrary to ANSI section 605.3 and ADAAG section 4.18.3.



- e. The paper towel dispenser requires pinch to remove paper towels contrary to ANSI section 309.4 and ADAAG section 4.27.4.



- 12. The counter height at the Police Station Administration Office is 43 inches above the finished floor, contrary to ANSI section 904.2 and ADAAG section 7.2(1).



13. The Court Office counter height is 43.5 inches above the finished floor, contrary to ANSI section 904.2 and ADAAG section 7.2(1).



14. The Police Department Service Window has a counter that measures 45.5 inches above the finished floor, contrary to ANSI section 904.2 and ADAAG section 7.2(1).





15. The ramp leading to the Mayor's Office has a slope of 11.9% and does not contain the required handrail extensions, contrary to ANSI sections 405.2 and 505.10.1 and ADAAG sections 4.8.2 and 4.8.5(2).

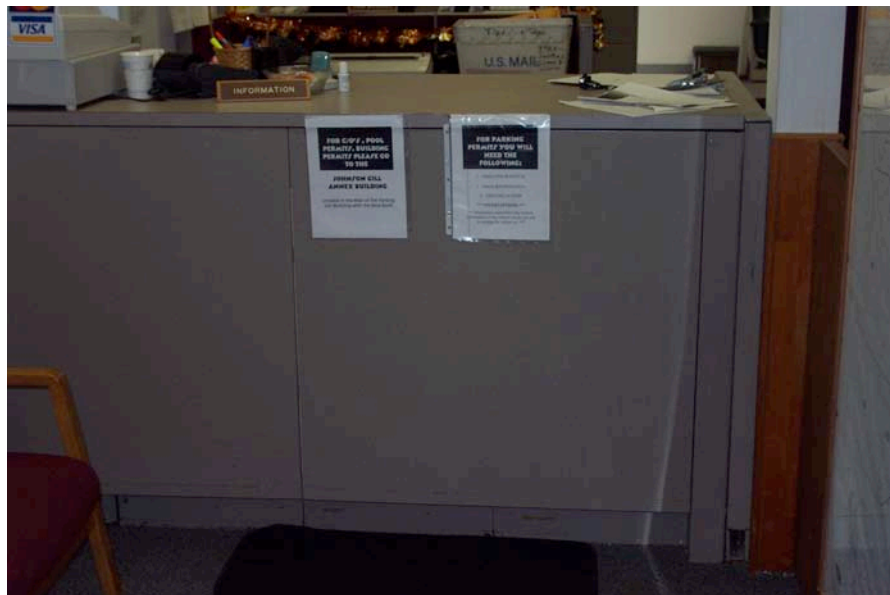
Note: The hand rails that are installed presently are not secured properly and could buckle when used.



16. The diameter of the handrails is 1.75 inches, contrary to ADAAG section 4.8.5.



17. The door at the mayor's office requires more than 5 pounds of pressure to open, contrary to ANSI section 404.2.9 and ADAAG section 4.13.11.
18. The counter at the Clerk's office measures 43 inches above the finished floor, contrary to ANSI section 904.2 and ADAAG section 7.2(1).



19. The Administration office counter measures 41 inches above the finished floor, contrary to ANSI section 904.2 and ADAAG section 7.2(1).



20. The water fountain in the building is above 36 inches and the controls are not in there proper place to be accessible ADAAG section 4.15.4.





21. The ramp on the Administration building has handrails 2.25 inches, contrary to ANSI section 505.7 and ADAAG section 4.8.5. In places the handrail is more than 1.5 inches and poses a danger of a disabled person getting their arm or hand trapped.



22. The curb cut at the Administration building has a slope of 12.3%, contrary to ANSI section 406.2 and ADAAG section 4.7.2.







23. There is no landing at the bottom of the ramp, contrary to ANSI section 406.3 and ADAAG section 4.8.5.



24. The access aisle at the parking space outside the entrance is 53 inches wide, contrary to ANSI section 502.3.1 and ADAAG section 4.6.6.



