

Middletown Public Library  
Main Branch  
55 New Monmouth Rd Middletown, NJ

1. The parking has the following problems to be corrected.
  - a. The cross slope at the access aisle is 2.7%, contrary to ANSI section 502.4 and ADAAG section 4.6.3.



- b. The running slope at the access aisle is 2.2%, contrary to ANSI section 502.4 and ADAAG section 4.6.3.



- c. The left space facing the library has a running slope of 4.1%, and a cross slope of 3.0%, contrary to ANSI section 502.4 and ADAAG section 4.6.3.







2. The front ramp has 8 sections with the following running slope measurements, contrary to ANSI section 405.1 and ADAAG section 4.8.1.
  - a. The second section from the bottom has a slope of 6.2%.
  - b. The third section from the bottom has a slope of 6.4%.



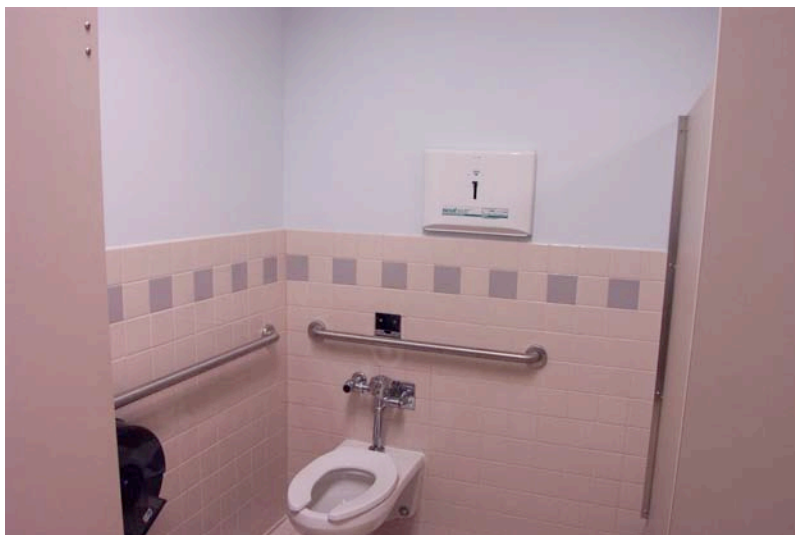
- c. The fourth section has a slope of 5.5%.
- d. The fifth section has a slope of 5.8%.







- e. The sixth section has a slope of 4.1%, which is within the guidelines.
  - f. The seventh section has a slope of 4.9%, which is also fine.
  - g. The eighth section has a slope of 5.3%.
3. The men's bathroom in the library has the following problems to be corrected.
- a. The toilet is mounted at 19 inches on center from the side wall, contrary to ANSI section 604.2 and ADAAG section 4.17.3
  - b. The toilet paper dispenser measures 44 inches off of the back wall, contrary to ADAAG section 4.16.6.
  - c. The seat cover dispenser measures 60 inches above the finished floor, contrary to ANSI section 308.2.1 and ADAAG section 4.27.3.



- d. There is a pinch lock on the stall door which requires pinching, grasping, and twisting of the wrist and hand, contrary to ANSI section 404.2.7 and ADAAG section 4.13.9.



- e. The side grab bar measures 48 inches off of the back wall, contrary to ANSI section 604.5 and ADAAG section 4.17.6.
  - f. The sink apron measures 26.5 inches above the finished floor, contrary to ANSI section and ADAAG section.
  - g. The sink apron offers 27 inches of underside clearance, contrary to ADAAG section.4.19.2.
  - h. There is no sign centered at 60 inches on the latch side of the door displaying the proper symbol, contrary to ANSI section 703.2.7 and ADAAG section 4.30.6.
- 4. The women's bathroom has the following problems to be corrected.
    - a. The seat covers are mounted 60 inches above the finished floor, contrary to ANSI section 308.2.1 and ADAAG section 4.27.3.
    - b. The sink apron measures 26.5 inches above the finished floor with no underside clearance, contrary to ADAAG section 4.19.2.
    - c. There is no sign centered at 60 inches on the latch side of the door displaying the proper symbol, contrary to ANSI section 703.2.7 and ADAAG section 4.30.6.
    - d. The changing table requires more than 5 pounds of pressure to open, contrary to ANSI section 309.4 and ADAAG section 4.27.4.
  - 5. The water fountain flow is less than 4 inches, contrary to ANSI section 602.6 and ADAAG section 4.15.3.

6. The tables in the main library measure 26 inches to the bottom of the edging, contrary to ANSI section 902.3 and ADAAG section 4.32.4.



7. The round tables measure 26.5 inches to the bottom above the finished floor, contrary to ANSI section 902.3 and ADAAG section 4.32.3. There is no underside clearance of 19 inches.



8. The check out counter in the library is above 36 inches when measured above the floor contrary to ANSI section 904.3 and ADAAG section 7.2



9. The secondary means of egress has tables that are not accessible contrary to ANSI section 902.3 and ADAAG section 4.32.3. Where as these tables are not built in, the important matter is offering equal accommodations to disabled customers. This area is used as a study area and should have accessible elements also.







10. There is a concrete picnic table without proper clearance of 30 inches by 48 inches with 19 inches of under side clearance contrary to ANSI section 902.2 and ADAAG section 4.3.



11. The curb cut onto the sidewalk is not across from the parking spaces and forces the customer to enter the street to access the sidewalk contrary to ANSI section 502.3 and ADAAG section 4.6.2.







Curb across from the parking spaces



12. The back parking spaces are not the closest to an accessible entrance, contrary to ANSI section 502.3 and ADAAG section 4.6.2. There needs to have a sign in front of each space contrary to ANSI section 502.3 and ADAAG section 4.6.4.