

Middletown Township
Bayshore Library Branch
180 Main Street Port Monmouth, New Jersey

1. The following problems were found in the parking area.
 - a. There is no access aisle next to the designated disabled parking space, contrary to ANSI section 502.3 and ADAAG section 4.6.3.
 - b. The parking space is not long enough per ANSI section 502.2 and ADAAG section 4.6.3.
 - c. The disabled parking space, when utilized, blocks the sidewalk which is the designated route of travel around this facility, contrary to ANSI section 403.5 and ADAAG section 4.3.3.



2. The front entrance ramp has a slope of 6.3%, contrary to ANSI section 404.2.4.5 and ADAAG section 4.16.6.





3. The return book bay to the left of the front door requires more than 5 pounds of pressure to operate, contrary to ANSI section 309.4 and ADAAG section 4.27.4.



4. The women's restroom has the following problems to be corrected.
 - a. The toilet measures 19 inches off of the side wall, contrary to ANSI section 604.2 and ADAAG section 4.17.3.
 - b. The toilet measures 15 inches high above the finished floor, contrary to ANSI section 604.4 and ADAAG section 4.16.3.
 - c. There are no grab bars mounted behind and to the side of the toilet, contrary to ANSI section 604.5 and ADAAG section 4.17.6.



- d. There is a pinch lock on the stall door which requires pinching, grasping, and twisting of the wrist and hand, contrary to ANSI section 404.2.7 and ADAAG section 4.13.9.
- e. There is non self closing door on the stall, contrary to ANSI section 404.3.
- f. There is a round door knob on the bathroom door, contrary to ANSI section 404.2.7 and ADAAG section 4.13.9. There is no sign mounted at 60 inches on the latch side of the door per ADAAG section 4.30.4.30.6 or ANSI section 703.2.7 which states the sign shall be mounted at a height of 48 inches on center.



- g. The paper towel dispenser measures 49 inches above the finished floor for a frontal approach, contrary to ANSI section 308.2.1 and ADAAG section 4.2.5.



- h. The hot water and drain pipes under the sink are not insulated, contrary to ANSI section 606.6 and ADAAG section 4.19.4.



- i. The mirror measures 45 inches above the finished floor to the bottom of the reflective surface, contrary to ANSI section 603.3 and ADAAG section 4.19.6.
- j. The coat hook measures 65 inches above the finished floor, contrary to ANSI section 603.4 and ADAAG section 4.2.5.



- 5. The men's bathroom has the following problems to be corrected.
 - a. The urinal measures 22.5 inches to the lip and 52 inches to the flush valve above the finished floor, contrary to ANSI section 605.2 and ADAAG section 4.18.2.



- b. The toilet measures 19 inches off of the side wall, contrary to ANSI section 604.2 and ADAAG section 4.16.2.
- c. The toilet measures 15 inches high above the finished floor, contrary to ANSI section 604.4 and ADAAG section 4.16.3. The flush valve is on the narrow side of the stall contrary to ADAAG section 4.16.5.
- d. There are no grab bars mounted behind and to the side of the toilet, contrary to ANSI section 604.5 and ADAAG section 4.17.6.



- e. There is a pinch lock on the stall door which requires pinching, grasping, and twisting of the wrist and hand, contrary to ANSI section 404.2.7 and ADAAG section 4.13.9.
- f. There is non self closing door on the stall, contrary to ANSI section 404.3.
- g. There is a round door knob on the bathroom door, contrary to ANSI section 404.2.7 and ADAAG section 4.13.9. There is no sign mounted at 60 inches on the latch side of the door per ADAAG section 4.30.4.30.6 or ANSI section 703.2.7 which states the sign shall be mounted at a height of 48 inches on center.



- h. The paper towel dispenser measures 49 inches above the finished floor for a frontal approach, contrary to ANSI section 308.2.1 and ADAAG section 4.2.5.
- i. The hot water and drain pipes under the sink are not insulated, contrary to ANSI section 606.6 and ADAAG section 4.19.4.
- j. The mirror measures 45 inches above the finished floor to the bottom of the reflective surface, contrary to ANSI section 603.3 and ADAAG section 4.19.6.



- k. The coat hook measures 65 inches above the finished floor, contrary to ANSI section 603.4 and ADAAG section 4.2.5.



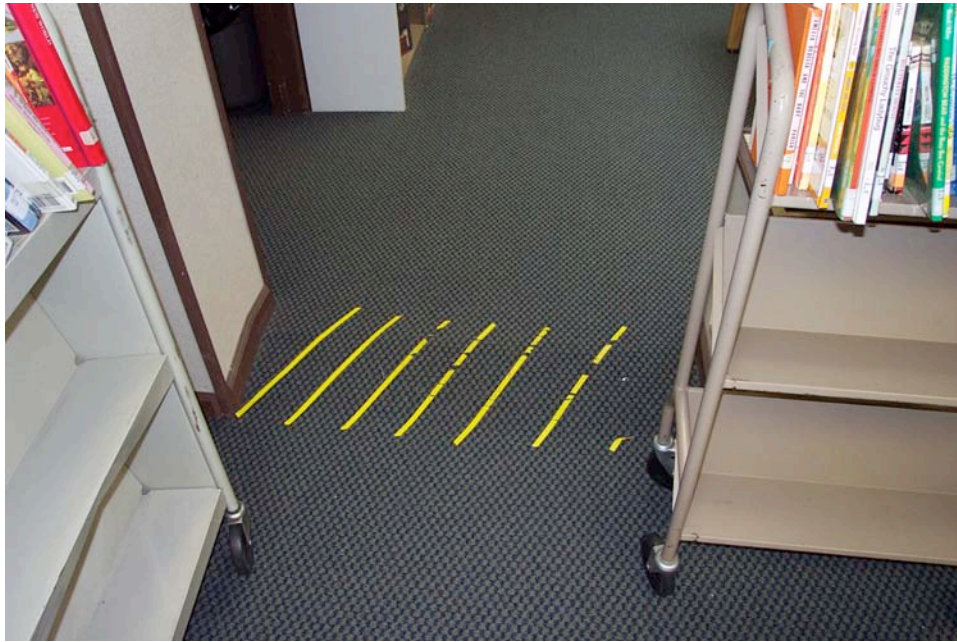
- 6. The computer resource desk is not accessible according to the guidelines set by ANSI section 902.3 and ADAAG sections 4.32.3 and 4.32.4.



7. The tables in the library measure 25.5 inches above the finished floor, contrary to ANSI section 902.3 and ADAAG section 4.32.4.



8. There are return book carts that are frequently positioned within the path of travel, therefore reducing the accessible route to less than 36 inches wide, contrary to ANSI section 403.3 and ADAAG section 4.3.3.



9. The back door has a ramp with a slope of 8.6%, contrary to ANSI section 405.2 and ADAAG section 4.8.2.





10. The door closes faster than 5 seconds when measured from a 90 degree angle to within 12 degrees of the door jam, contrary to ANSI section 404.2.8.1 and ADAAG section 4.13.10.

